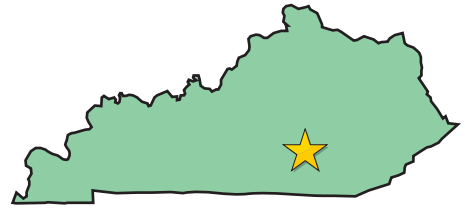


LAKE CUMBERLAND REGIONAL HOSPITAL

Somerset, Kentucky

(Population: 11,786 • Service area: 187,203)



Known as the Gateway to Lake Cumberland, the city of Somerset blends southern hospitality with abundant recreational opportunities that attract more than 1.5 million people to the region every year.

THE HOSPITAL

Lake Cumberland Regional Hospital, a 259-bed facility, provides primary and secondary medical services to an 11-county area. The hospital, a recent winner of the prestigious and nationally renowned 100 Top Hospitals award, is one of only three hospitals in the United States that serves both as a rural regional referral center and a disproportionate-share facility. Lake Cumberland Regional Hospital recently launched a \$55 million construction project, which includes a new patient tower (25 additional beds) and a three-level parking garage.



LAKE CUMBERLAND Regional Hospital

The public school system of Pulaski County serves approximately 7,000 students with eight elementary schools, two middle schools, and two high schools. Within the Somerset Independent School System is one elementary school, one middle school, and one high school.

Somerset is also home to the **Center for Rural Development**, which brings nationally recognized, high quality performing and visual arts, concerts and other special events to the community.

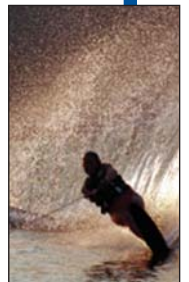
Somerset Community College, a division of the **Kentucky Community-Technical College System (KCTCS)**, offers associate degrees and curricula for the first two years toward a bachelor's degree. In addition, seven other colleges and universities are located within



75 miles of Somerset. Winter brings **Christmas Island**, one of the largest holiday lighting displays in Kentucky. Somerset is also home to the **Somernites Cruise** (shown to the left), the largest car and cruise show in Kentucky, held on the fourth Saturday of each month from April to October.

RECREATION

Somerset is home to beautiful **Lake Cumberland**, a 65,000-acre lake with 1,200 miles of shoreline. Lake Cumberland offers a wealth of recreational opportunities and provides excellent fishing for crappie, bass and other types of fish. Water sports from sailing and water skiing to houseboating are all popular on the lake. Located in the middle of Lake Cumberland, **General Burnside Island State Park** provides a peaceful retreat for campers, boaters, golfers and fishermen, with a campground and an 18-hole golf course. Four additional golf courses are located within the area. Known as the Niagara of the South, **Cumberland Falls** boasts the only Moonbow in the Western Hemisphere, as well as white-water rafting and canoeing. **Daniel Boone National Forest** has more than 704,000 acres of mostly rugged terrain, with steep forested ridges, narrow ravines, 3,400 miles of sandstone cliffs and 600 miles of beautiful trails.



Center for Rural Development

Facilities include a state-of-the-art Intensive Care Unit, comprehensive Clinical Pathology, a Radiology Department with Nuclear Medicine, Ultrasound, whole-body spiral CT Scanning and two 1.5 Tesla fixed-site MRIs. Other services include the Heart and Lung Institute, where thoracic and cardiac surgery are offered, Rehab, Neuro Sciences Institute, and two Cath Labs. The facility, a regional cancer treatment center, has a Linear Accelerator and IMRT. The 24-hour ER is among the busiest in the state. Specialties include Gastroenterology, OB Neurosurgery, Orthopedic, General Surgery, Gynecology, Ophthalmology, Cardiology, ENT, Open Heart, Urology, Pulmonary Medicine, and Pediatrics.

THE COMMUNITY

Located just minutes from I-75, Somerset has a strong and solid business climate. The city is known as the houseboat capital of the world, with the majority of houseboats being manufactured in the immediate area.



Lake Cumberland

Distance to Major Cities

Lexington, KY	81 miles
Knoxville, TN	130 miles
Cincinnati, OH	165 miles
Nashville, TN	175 miles